



# Welcome to Walailak Library

Services for support

● Teaching ● Studying ● Research



# 4Tools

Help to studying & Research



# Online Databases and Sources

Access via website

01



## ONLINE RESOURCE



ONLINE DATABASE



E-BOOKS  
DATABASE



E-JOURNALS



E-THESIS (TDC)



UNION CATALOG  
(UCTAL)



LIBRARY TOOLS

[https://library.wu.ac.th/?page\\_id=2559](https://library.wu.ac.th/?page_id=2559)



### ACADEMIC SEARCH COMPLETE (ASC)

Academic Search Complete is the world's most valuable and comprehensive scholarly, multi-disciplinary full-text database, with more than 8,500 full-text periodicals, including more than 7,300 peer-reviewed journals. In addition to full text, this database offers indexing and abstracts for more than 12,500 journals and a total of more than 13,200 publications including monographs, reports, conference proceedings, etc. The database features PDF content going back as far as 1887, with the majority of full text titles in native (searchable) PDF format. Searchable cited references are provided for more than 1,400 journals.

ฐานข้อมูลสหสาขาวิชาที่มีขนาดใหญ่และดีที่สุด และครอบคลุมสาขาวิชาจำนวนมากที่สุดของโลกฐานข้อมูลหนึ่ง ประกอบด้วยจำนวนวารสารที่มีข้อมูลฉบับเต็มมากกว่า 8,500 ชื่อเรื่อง ย้อนหลังไปตั้งแต่ปี ค.ศ. 1887 และครอบคลุมทุกสาขาวิชาการ ได้แก่ : มานุษยวิทยา, ดาราศาสตร์, ชีววิทยา, เคมี, วิศวกรรมโยธา, วิศวกรรมศาสตร์, การศึกษาชาติพันธุ์ & วัฒนธรรม, ภูมิศาสตร์, กฎหมาย, วัสดุศาสตร์, คณิตศาสตร์, ดนตรี, เภสัชศาสตร์, ฟิสิกส์, จิตวิทยา, ศาสนาและเทววิทยา, สัตวแพทยศาสตร์, สถิติศึกษา, สัตววิทยาและสาขาอื่นๆ



ScienceDirect





# EndNote 20

02

is a commercial reference management software package, used to manage bibliographies and references when writing essays, reports and articles.

# EndNote enables you to:

01

**transfer**

transfer and store references from electronic databases and library catalogues

02

**citation**

insert citations to Word as you write

03

**styles**

change styles easily and format a bibliography

04

**fulltext**

find fulltext

05

**sync**

sync your library and work across devices and platforms



# Turnitin

03

- Turnitin is a 'text-matching' software which is designed to educate students regarding appropriate citation and referencing techniques.




# How to use Turnitin as a student?



## **access the assignment**

Once a lecturer has created a Turnitin assignment within a Course you are enrolled in, you will be able to access the assignment and submit your assignment



## **submit your paper**

When you submit your paper, Turnitin compares it to text in its massive database of student work, websites, books, articles, etc.

You check your paper before final report

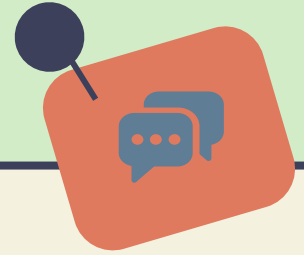
- contact staff to

**get Class ID & Enrollment key**

For check plagiarism by yourself in class via e-mail :

[nassara.ja@wu.ac.th](mailto:nassara.ja@wu.ac.th) or **line ID**

—Class ID & Enrollment key



**Line Official**





04

Workshop  
& training

# Program for Students

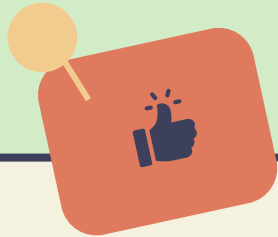
## Research Support Series

Provide training services as if there were assistant professors and researchers. to provide assistance in various steps of doing research for researchers

- Searching from online databases
- helping citations and writing a bibliography with Endnote20  
Bibliography Manager
- Checking plagiarism with Turnitin.

# Workshop & training

Go to website [library.wu.ac.th/training/register](https://library.wu.ac.th/training/register)



## Program

Find program  
month by month



## Register

Register via  
google form



## Training

Training via ZOOM  
Application

## You get Training every month

- Training using Turnitin for (students)
- Using EndNote 20
- Searching Online Databases

—training



Get Class ID &  
Enrollment Key

**E-Mail**

Nasra.ja@wu.ac.th

**Submit a final  
paper**

caporn@wu.ac.th

# Contact



**Website**

[Library.wu.ac.th/](http://Library.wu.ac.th/)



**E-Mail**

[caporn@wu.ac.th](mailto:caporn@wu.ac.th)



**Line Official**





**Thank You**



Library Staff